

# User Guide

## Ready ? GO !



## **Overview**

**Ready ? GO !** is designed to target the MS-Project users to the readiness to begin a task.

Whether it is an external, internal or parallel predecessor tasks when the %Complete field is 100%, the green light will be turned on and notice that the next task is ready to start.

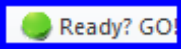
## **The Business Need**

Finish dates of predecessor tasks, do not necessarily indicate that the predecessor task is finished.

On the other hand 100% work complete (reported one way or another), definitely indicate that the predecessor task is finished.

## **The Solution**

### **In MS-Project 2010/2013**

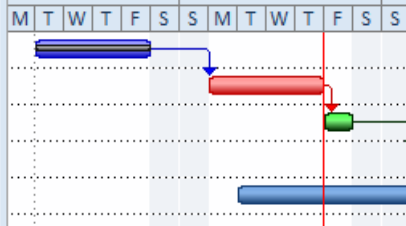
Clicking  will turn a green light on every tasks that are ready to begin.

### **For example:**

Tasks without predecessor

Tasks that their predecessor task is finished (internal or external)

Tasks that began but are not finished yet

	i	Task Name	Duration	Ready? GO!	Start	Finish	Feb '11					06 Mar '11					13			
							M	T	W	T	F	S	S	M	T	W		T	F	S
1	✓	Task 1	4d		01-03-11	04-03-11														
2		Task 2	4d	●	07-03-11	10-03-11														
3		Task 3	1d		11-03-11	11-03-11														
4		Task 4	1d		14-03-11	14-03-11														
5		Task 5	5d	●	08-03-11	14-03-11														

## In MS-Project 2007

Clicking  will turn a green light on every tasks that are ready to begin.

## Key Features & Benefits

Features & Benefit	Ready? GO!	MS-Project 2010	MS-Project 2013
Turns a green light on every task that is ready to begin	✓		
Allows filters on ready tasks	✓		
Checks both internal and external predecessors	✓		

## System Requirements

MS-Project Professional 2007 SP2 or MS-Project Professional 2010  
 .NET Framework 3.5 SP1 or Higher

<http://download.microsoft.com/download/2/0/e/20e90413-712f-438c-988e-fdaa79a8ac3d/dotnetfx35.exe>

Visual Studio Tools for the Microsoft Office System (version 3.0 Runtime)

<http://www.microsoft.com/downloads/en/details.aspx?FamilyID=54eb3a5a-0e52-40f9-a2d1-eeed7a092dcb&displaylang=en>

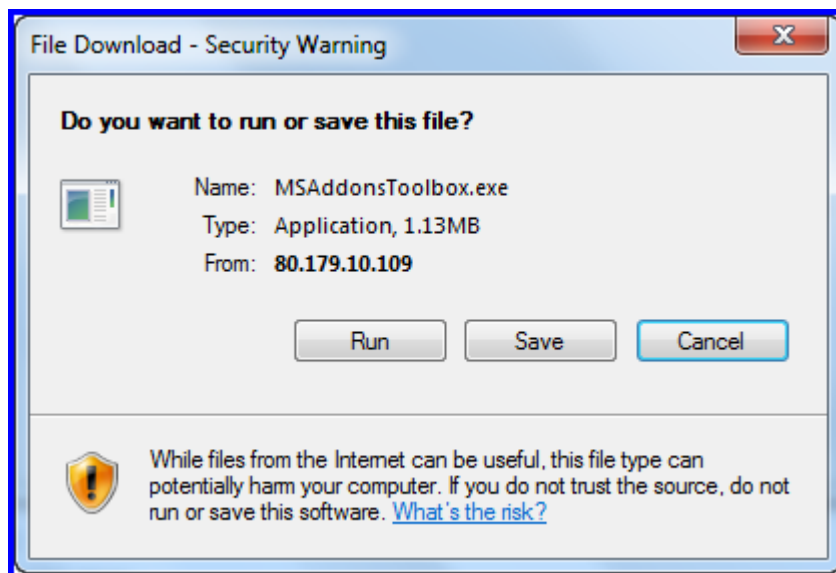
Visual Studio Tools for the Microsoft Office System (version 3.0 Runtime) Service pack 1

<http://www.microsoft.com/downloads/en/details.aspx?FamilyID=d8eb4921-891a-4b5e-973f-0b96e6ccf376>

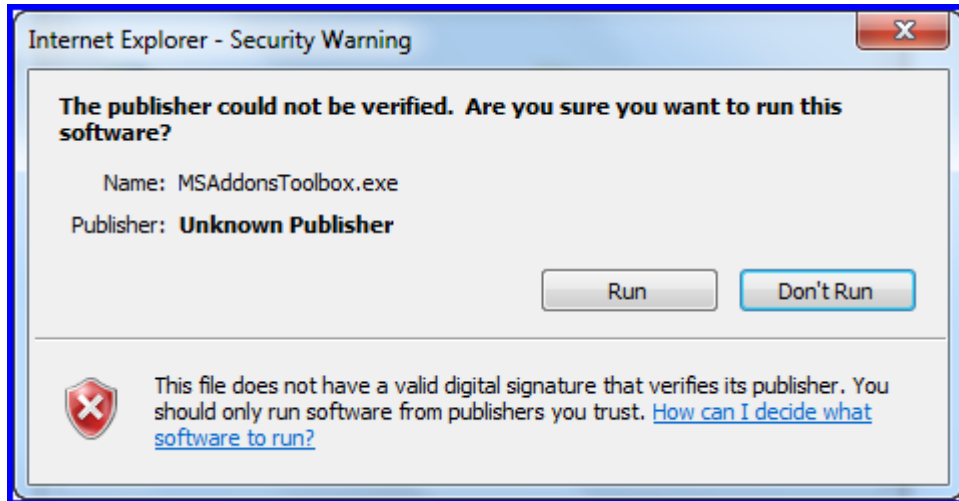
### **Installation Procedure**

In order to use Ready ? GO ! the add-on should be installed on a station where Microsoft Project Professional Client is installed.

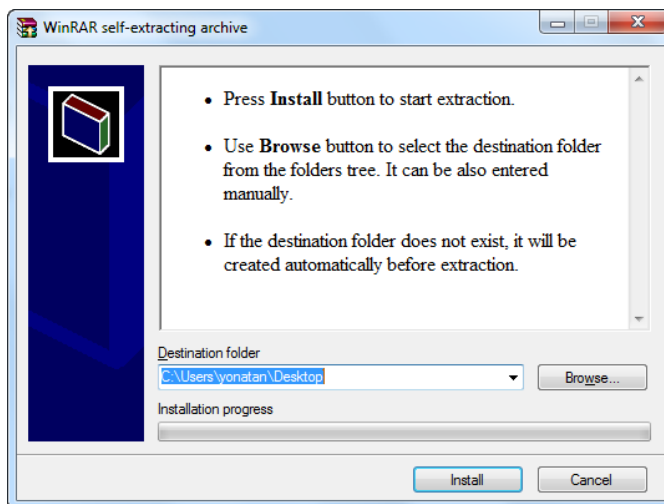
To install the Add-On, the following steps should be performed:



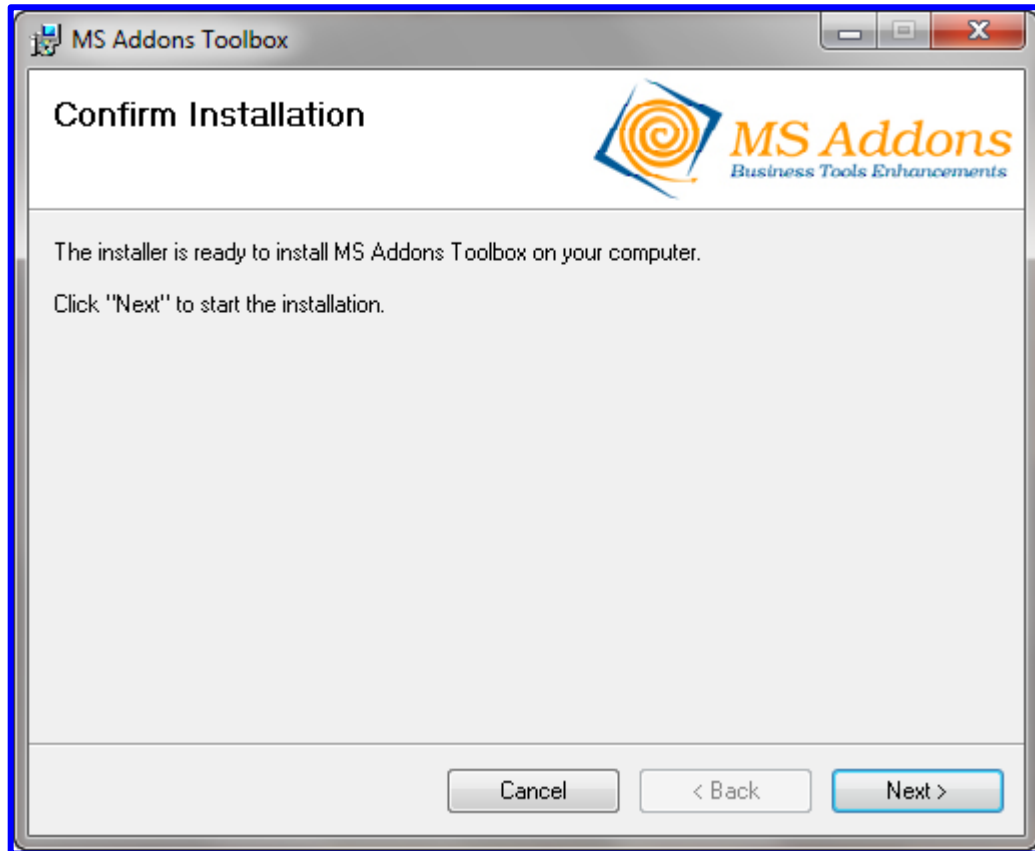
Press run:



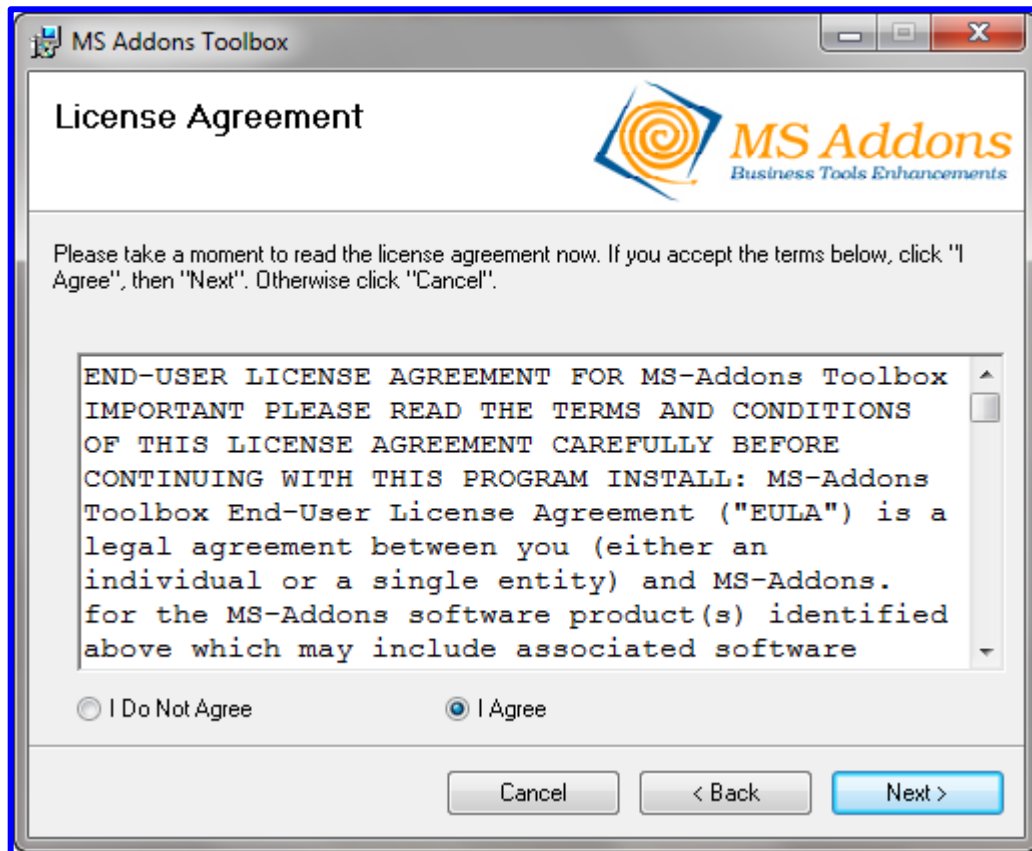
Press install:



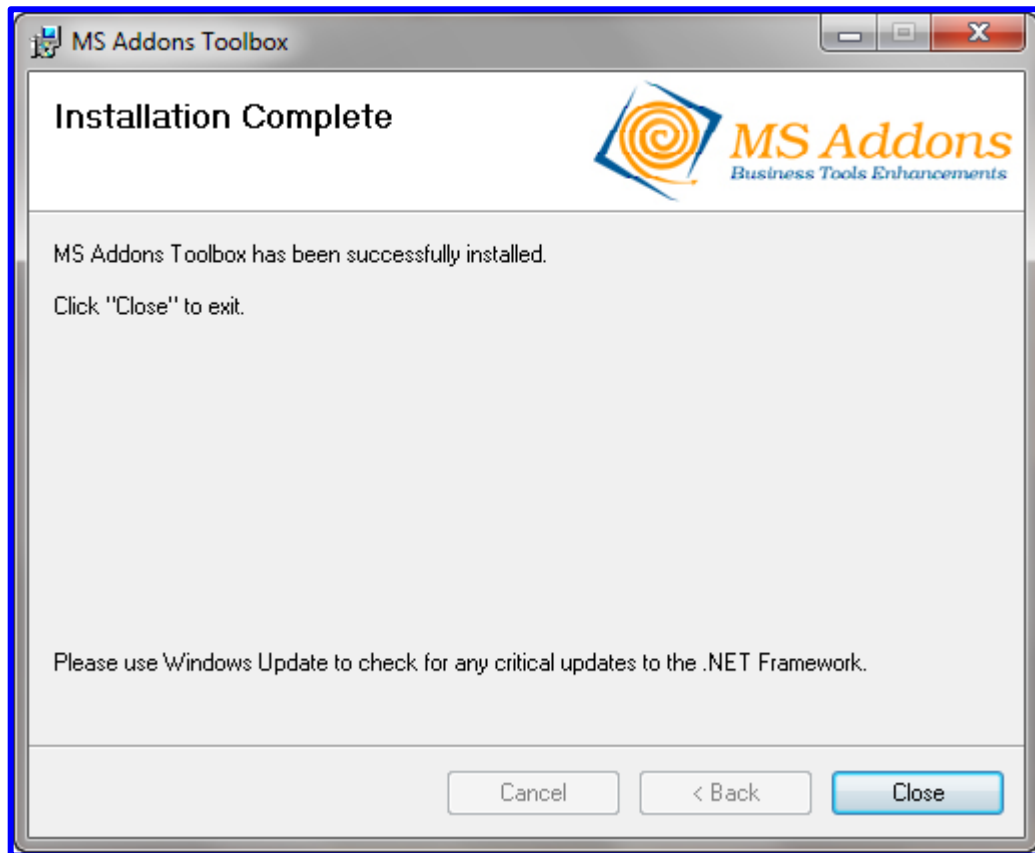
Press next:



Mark the "I Agree" button and press next:



Press close:



Open MS-Project (if opened you should close it and re-open), you will see the MS-Addon tool box.